

## COVID-19 Lung Pathology: Autopsy Findings

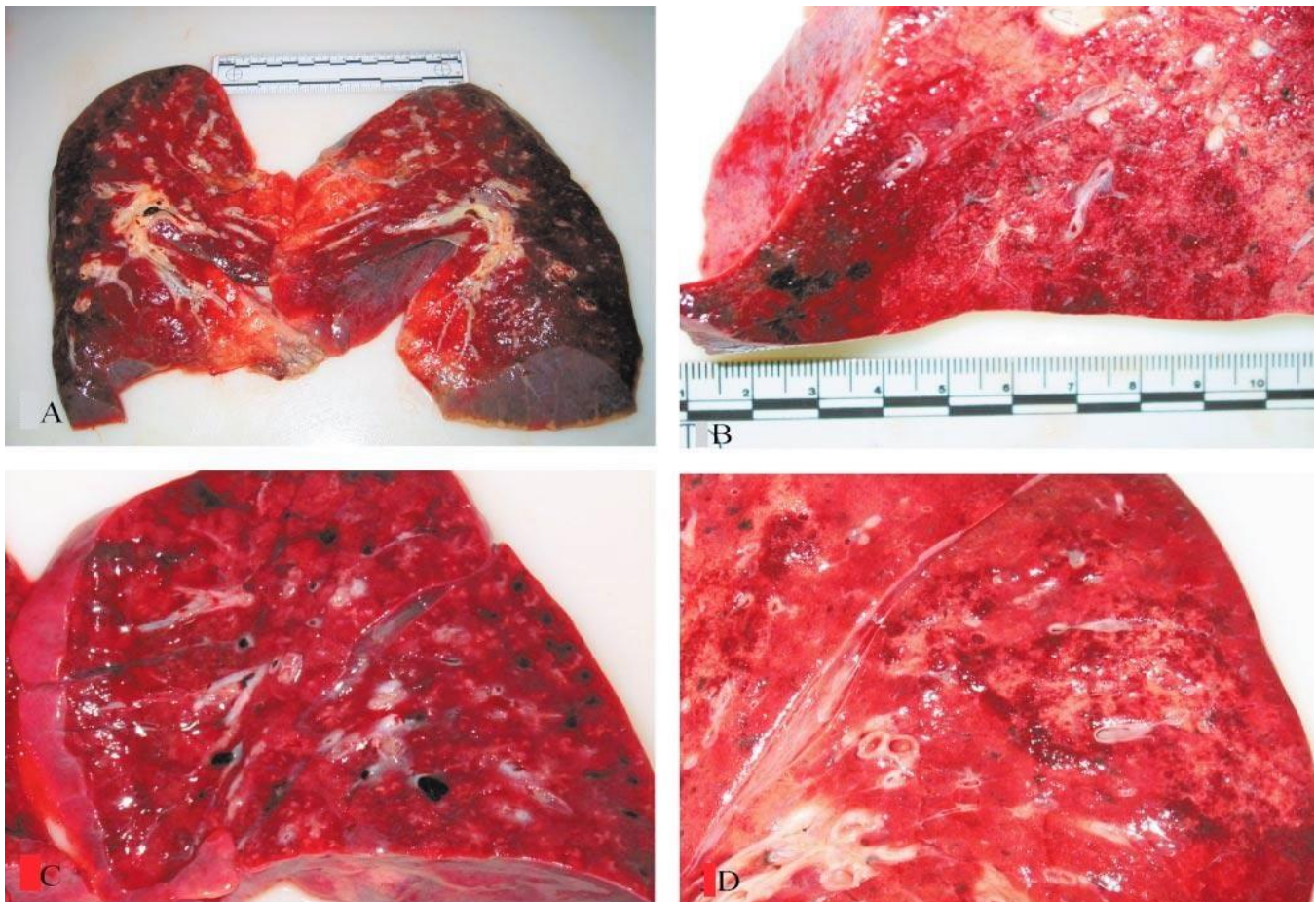
Moeza Ali<sup>1</sup>, Ahsan Irfan<sup>2</sup>

### How to Cite This:

Ali M, Irfan A. COVID-19 lung pathology – autopsy findings. *Biomedica*. 2020; 36 (COVID19-S2): 106.

1. Dr. Moeza Ali, PGR III, Internal Medicine. Pulmonology Department, Sheikh Zayed Hospital, Lahore -Pakistan.
2. Ahsan Irfan, Senior Registrar. Pulmonology Department Sheikh Zayed Hospital, Lahore-Pakistan.

Correspondence to:  
Dr. Moeza Ali, PGR III, Internal Medicine, Pulmonology,  
Sheikh Zayed Hospital, Lahore -Pakistan  
Email: mmali.212@gmail.com



**Fig.1:** Gross appearance of lung with diffuse alveolar damage from Severe Acute Respiratory Syndrome Coronavirus -2 (SARS-COV-2) and non-SARS cases at autopsy. A, SARS-COV-2 lung showing reddish, meaty appearance with poor aeration. B, SARS -COV-2 lung showing a grayish, solid, meaty appearance with hemorrhagic infarct. C, Adenovirus pneumonia, showing small, pale nodules distributed diffusely through the lung parenchyma. D, Streptococcal pneumonia, with a septic infarct.

### REFERENCES

1. Autopsy case series. *Lancet Respir Med*. 2020; Apr. 18 [Epub ahead of print].